



# MONTCLAIR'S OFFICE OF SUSTAINABILITY

## JUNE NEWSLETTER

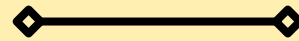
### Stop Wish-Cycling, Start Recycling!

Wishcycling, the practice of tossing items into the recycling bin with the hope that they can be recycled, is detrimental to the recycling process. While it may seem like a well-intentioned effort to reduce waste, wishcycling actually leads to contamination of recyclable materials, making them more difficult and costly to process.

Contaminants such as non-recyclable plastics or food residue can compromise the quality of recycled materials and may even render entire batches unusable. This increases the burden on recycling facilities, which must invest more time and resources in sorting and cleaning materials, thus decreasing recycling effectiveness and raising waste management costs. Educating individuals on proper recycling and encouraging them to only recycle accepted items minimizes contamination, maximizing recycling efficiency.

### In this issue:

Stop Wish-Cycling, Start Recycling!



Community Native Landscapes Project



Montclair Home Energy Efficiency Program

### Download the Recycle Coach App

Montclair Township has partnered with Recycle



Coach to provide residents with a free, interactive app that is a resource for in-depth information on how to dispose of any item, as well as view pick-up schedules and set reminders for pick-up days.

# MONTCLAIR RECEIVES \$20,000 GRANT FOR COMMUNITY NATIVE LANDSCAPES PROJECT

## The Project

A demonstration lawn will be installed at the Crescent Deck to showcase the beauty and practicality of native plants. This lawn will serve as a living example of sustainable landscaping practices and inspire residents to implement similar changes to their properties.

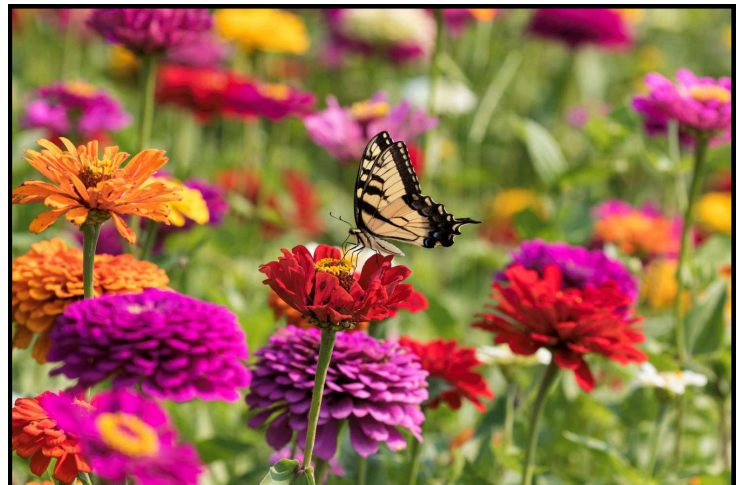


## Project Perks for Residents!

Up to 50 residents will have the opportunity to receive free soil testing and personalized consultations from professional landscape architects.

These consultations will provide tailored advice on how to transition to native lawns, ensuring each resident's unique landscape needs are addressed.

The Township encourages all residents to participate in the upcoming educational events to learn more about eco-friendly lawncare practices and designs. Together, we can make Montclair a model of sustainable living and inspire other communities to follow our lead.



For more information about this project and to stay updated on upcoming events, please visit Montclair's Office of Sustainability's webpage on our Township website.

# Montclair Home Energy Efficiency Program

Providing PSE&G customers great savings on their energy bills

Learn more and sign up:

[energyoutreachnj.com/montclair](http://energyoutreachnj.com/montclair)



## How the process works



- 1** Find out which program you qualify for based on your household income
- 2** Schedule a free or low-cost energy consultation with a certified professional
- 3** You'll get a personalized report suggesting ways to save energy, cut costs, and access rebates. Based on income and home needs, you might qualify for free energy-efficient upgrades.

## What's checked?

- Overall comfort levels
- Health and safety measures
- Windows and doors
- Insulation levels
- Heating and cooling systems (HVAC)
- Water heating equipment
- Light fixtures and appliances

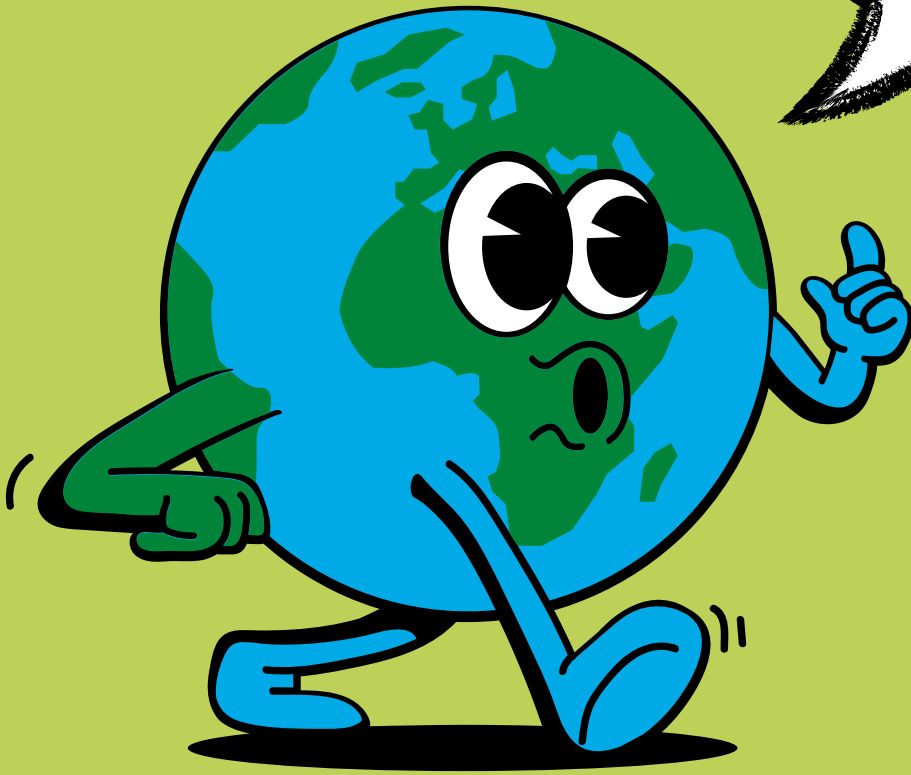
Sponsored by Montclair Township in Partnership with Sustainable Jersey and PSE&G

Call to schedule your energy consultation today:

**1-855-846-2895**



**THANKS  
FOR  
READING!**



Do you want to know more about the topics in this newsletter? Are you interested in volunteering for initiatives/projects with our department? Feel free to reach out!

 [mcunliffe@montclairnjusa.org](mailto:mcunliffe@montclairnjusa.org)

Stay tuned for next month's issue where we discuss topics like the USDA Community Forestry Grant. Haven't read our other newsletters? Take a look on our department page:  
<https://www.montclairnjusa.org/Government/Departments/Office-of-Sustainability/Monthly-Newsletter>